

S-Quick hitch

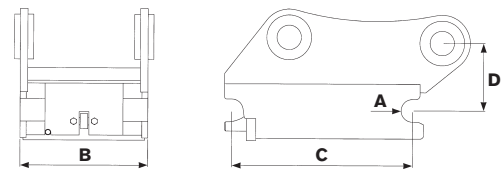
For all excavators in the 1–6 tonne weight classes

- » Designed for tiltrotator digging – the digging forces are distributed through the body of the hitch, not the hitch ram.
- » Hydraulic locking for speedy attachment and tool changes straight from the cab.
- » Play-free connection.
- » Robust, reliable and value-for-money.
- » Low installation dimensions.
- » Low weight.
- » Welded, high-strength steel.
- » Can be supplied with hydraulic or mechanical locking.



Specifications

Typ	S30	S40
Axle diameter: (mm)	30	40
Width: (mm)	180	200
Length: (mm)	230	300
Construction height: (mm)*	110	110
Weight: (kg)*	15	25
Recommended hydraulic pressure open/closed	21/3–6	21/3–6
Max hydraulic pressure: (MPa)	22	22
Base machine weight: (t)	1–2	2–6



*Depending on attachment

CHANGE THE WORLD OF DIGGING

engcon Australia | Unit 2, 18 Peter Brock Drive, Eastern Creek, NSW 2766
 Tel +61 2 7252 5279 | E-mail australia@engcon.com | Web engcon.com