

# Cable bucket

## For all excavators in the 1.5–33 tonne weight classes

Engcon's cable bucket – developed for precision excavation with minimal width for e.g. cables or other services requiring narrow trenches. Its deep profile means better accessibility beneath intersecting cables and pipes and also allows deep trenching without the need for the tiltrotator to go below surface level.

### Engcon's cable buckets are available in two models – Standard and tapered (C)

**Standard** is the conventional type with parallel side plates for excavating ditches with vertical sides.

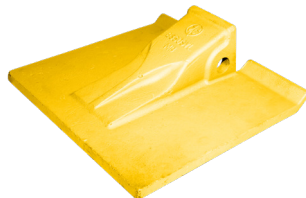
**The tapered** model has a narrower blade than the standard cable bucket but with the same width top, producing a narrower trench bottom with slightly sloping sides.

Engcon's cable buckets are made from high-quality steel. As with other Engcon buckets, the cutters and other exposed wear surfaces have a hardness of 500 Brinell.

### A factory-fitted tooth kit is available as an optional extra.



Tooth kit, type Cat



Blade teeth provide smooth ditch bottoms



Standard



Conical

## Specifications

Model	CB01	CB03	CB03	CB05	CB05	CB08	CB10	CB15	CB15C	CB20	CB20	CB25	CB25	CB29	CB29
Volume: (l)	35	90	90	130	130	155	160	350	350	400	400	550	550	800	800
Width: (mm)	240	290	290	340	340	400	460	560	300	660	660	600	600	700	700
Weight: (kg)	25	55	55	70	85	95	160	290	255	320	360	590	615	744	777
Quick hitch standard:	S30	S30	S40	S40	S45	S45	S45	S60	S60	S60	S70	S70	S80	S70	S80
Base machine weight (t)	1,5–2	2–4	2–4	4–6	4–6	6–10	8–13	13–17	13–17	17–22	17–22	22–27	22–27	27–33	27–33

## CHANGE THE WORLD OF DIGGING