

S-Quick coupler

For all excavators in the 2,200–13,200 lbs weight classes

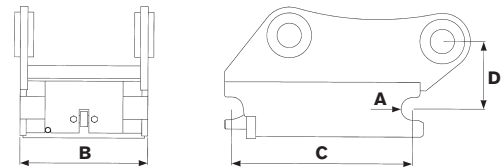
- » Can be supplied with hydraulic or mechanical locking.
- » Hydraulic locking for speedy attachment and tool changes straight from the cab.
- » Play-free connection.
- » Changeable for deep and shallow digging.
- » Robust, reliable and affordable.
- » Low installation dimensions.
- » Low weight.
- » Welded, high-strength steel.



Specifications

Model	S30	S40
Axle diameter: (inch)	1.2	1.6
Width: (inch)	7.1	7.9
Length: (inch)	9.1	11.8
Construction height: (inch)*	4.3	4.3
Weight: (lbs)*	33	55
Recommended hydraulic pressure open/closed (psi)	3,050/435–870	3,050/435–870
Max hydraulic pressure: (psi)	3,200	3,200
Base machine weight: (lbs)	2,200–4,410	4,410–13,200

*Depending on attachment



CHANGE THE WORLD OF DIGGING

engcon Canada Inc | 3220 Av. Jacques-Bureau, Laval QC H7P 0A9

E-mail canada@engcon.com | Web engcon.com