

# Automatic machine coupler

## Automatic machine coupler for excavators 6,600–88,200 lbs

**Q-Safe™**

Connect and disconnect your tiltrotator or other hydraulic tools without having to leave the cab. Comfort, safety and profitability – standard engcon features. All purchases of engcon's machine couplers, tiltrotators and control systems include EC-Oil, engcon's fully automatic quick coupler system.

- » Hydraulic locking with fourfold safety:
  1. Electronic sensors detect when both pins have contact.
  2. A check valve prevents the hydraulic cylinder from opening even if a hose ruptures or a pressure drop should occur.
  3. Powerful exterior springs keep the coupler locked even if the electronics and hydraulics fail
  4. Unique lock bolt design provides additional safety. Because the bucket axle abuts the coupler side plates, it cannot drop out of position even if all three of the preceding steps should fail.
- » Front and rear locks minimises the risk of accidents caused by swinging tools and attachments
- » The machine coupler is supplied as standard with external audible and visible warning signals to alert the surrounding area
- » Quick coupler with all 4 hooks facing the direction of excavation doubles the contact surfaces. This means digging forces are distributed evenly across the coupler, minimising the risk of play between the machine coupler and the tool
- » The standardised control panel simplifies control of both the machine coupler and tiltrotator coupler, which minimises the risk of incorrect operation
- » With the ground pressure function\*, the tool can only be removed when it exerts a given pressure on the ground. This minimises the risk of dropped buckets
- » Welded high-strength steel
- » Fits all excavators in the specified weight class independent of control system
- » The hook is safety classified in compliance with EN ISO 12100-1/A1:2009 and EN ISO 12100-2/A1:2009
- » This coupler type is also fitted as standard equipment under engcon tiltrotators with coupler sizes S40-S80

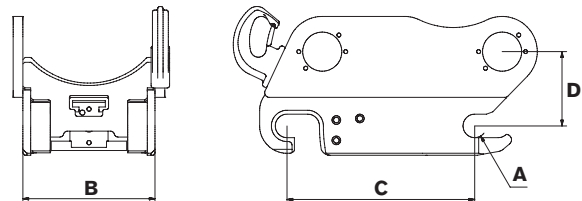
\*Optional extras



### Specifications

Model	S40	S45	S60	S70	S80
Axle diameter A: (inch)	1.6	1.8	2.4	2.8	3.1
Width B: (inch)	7.9	11.4	13.3	17.7	23.2
Length C: (inch)	11.8	16.9	18.9	23.6	26.4
Construction height D*: (inch)	5.3	5.5	7.3	8.1	10.6
Weight*: (lbs)	132	220	397	639	816
Recommended hydraulic pressure open/closed (psi)	3,050 -3,630	3,050 -3,630	3,050 -3,630	3,050 -3,630	3,050 -3,630
Max hydraulic pressure: (psi)	5,080	5,080	5,080	5,080	5,080
Base machine weight: (lbs)	6,600 -13,200	13,230 -24,250	26,400 -41,900	44,100 -66,100	59,530 -88,200

\*Depending on attachment



**CHANGE THE WORLD OF DIGGING**

engcon Canada Inc | 3220 Av. Jacques-Bureau, Laval QC H7P 0A9

E-mail [canada@engcon.com](mailto:canada@engcon.com) | Web [engcon.com](http://engcon.com)