

S-Quick coupler S30, S40

engcon[®]

- Can be supplied with hydraulic or mechanical locking
- Hydraulic locking for speedy attachment and tool changes straight from the cab
- Play-free connection
- Changeable for deep and shallow digging (S30-S40)
- Robust, reliable and affordable
- Low installation dimensions.
- Low weight
- Welded, high-strength steel
- Type-approved lifting hook (not S30 and S40)

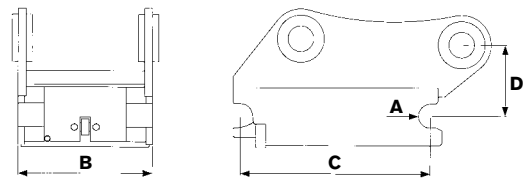
S30, S40



Specifications

Model	S30	S40
Axle diameter: (inch)	1.2	1.6
Width: (inch)	5.9	7.9
Length: (inch)	7.9	11.8
Construction height: (inch)*	4.3	4.3
Weight: (lbs)*	22	55
Recommended hydraulic pressure open/closed (psi)	3050/435-870	3050/435-870
Max hydraulic pressure: (psi)	3200	3200
Base machine weight: (lbs)	2200-4410	4410-13230

*Depending on attachment



TOOL SYSTEMS FOR INCREASED PROFITABILITY

engcon North America, inc. 222 Elm St. #4, North Haven, CT 06473
Phone +1 203 691 5920 | **Email** northamerica@engcon.com | engcon.com