

S30-S80, S1-S3: For all excavators in the 1-33 metric ton weight range

- Can be supplied with hydraulic or mechanical locking
- Hydraulic locking for speedy attachment and tool changes straight from the cab
- Play-free connection
- Changeable between deep and shallow digging (S30-S80)
- Robust, reliable and affordable
- Low profile dimensions
- Low weight
- Welded, high-strength steel design
- Type-approved lifting hook (not S30 and S40)

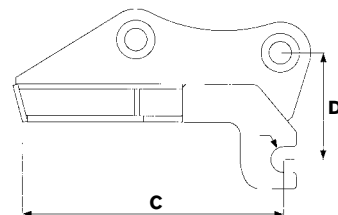
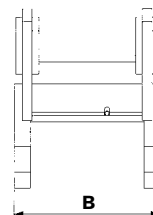
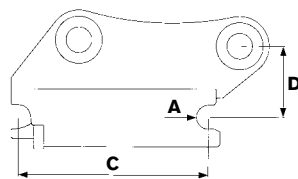
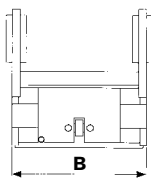
S30-S80 | S1-S3



This type of quick coupler was replaced during 2014/2015 by the Q-Safe™ quick coupler for the S45, S50, S60 and S70 sizes.

Specifications

Type	S30/150	S30/180	S40/200	S40/240	S45	S50	S60	S70	S80	S1	S2/27	S3
Axle diameter A: (inches)	1.2	1.2	1.6	1.6	1.8	2	2.4	2.8	3.1	2.8	3.1	3.9
Width B: (inches)	5.9	7.1	7.9	9.4	11.4	10.6	13.4	17.7	23.2	15.7	17.7	24.4
Length C: (inches)	7.9	9.1	11.8	11.8	16.9	16.9	18.9	23.6	26.4	29.5	31.9	34.3
Construction height D: (inches)	4.3	4.3	4.3	4.3	5.5	5.5	6.7	7.5	8.7	5.1	6.7	9.1
Weight (lbs)	22	22	55	55	99	110	275	462	682	374	473	660
Max hydraulic pressure: (psi)	5.5	5.5	5.5	5.5	5.5	5.5	5.5	5.5	5.5	5.5	5.5	5.5
Base machine weight: (metric t)	1-2	1-2	2-6	2-6	6-11	6-11	12-19	16-30	25-33	18-26	22-32	25-33



TOOL SYSTEMS FOR INCREASED PROFITABILITY

engcon North America Inc. 222 Elm street #4, North Haven, CT 06473
 Phone (646) 851 0104 | Email northamerica@engcon.com | www.engcon.com