

QS45–QS80/QS45-ECO–QS80-ECO: Q-Safe™ – The safest quick coupler in the world! For all excavators in the 6-33 metric ton weight range

Q-Safe™ Features

- Hydraulic locking with threefold safety:
 1. Electronic sensors detect when both pins have contact
 2. A check valve prevents the hydraulic cylinder from opening even if a hose ruptures or there is a pressure drop
 3. Powerful, exterior springs keep the coupler locked even if the electronics and hydraulics fail
- The tool can only be removed when it is resting on the ground at a given pressure (option).
- Front and rear locks eliminate the risk of accidents caused by swinging tools.
- Q-Safe™ is supplied with light and sound warning devices to alert people in the surrounding area.
- Play-free design with twice the contact surface compared to many many other coupler systems.
- Longer “shark jaws” for easier, safer tool pick-up.
- Welded, high-strength steel design
- Available both as a quick coupler mounted to the excavator, and as a coupler under the tiltrotator
- Suitable for all excavators in the weight range specified, regardless of operating system
- Hook safety classification is in compliance with EN ISO 12100-1/A1:2009 and EN ISO 12100-2/A1:2009

QS45 | QS60 | QS70 | QS80 or
QS45-ECO | QS60-ECO | QS70-ECO | QS80-ECO

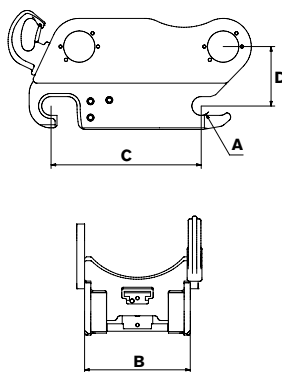


**EC-Oil™
READY**



Combine with QSC

In combination with our QSC system the bucket/tool will require ground pressure to open the quick coupler lock. Optional: slew/lift restriction will activate if the Q-safe coupler indicates an incorrect coupling.



Technical data

Type	QS45	QS50	QS60	QS70	QS80
Axle diameter A: (inches)	Ø1.8	Ø2	Ø2.4	Ø2.8	Ø3.1
Width B: (inches)	11.4	10.6	13.4	17.7	23.2
Length C: (inches)	16.9	16.9	18.9	23.6	26.4
Construction height D: (inches)	5.5	5.5	6.7	7.5	10.6
Weight (lbs)	220	231	396	638	814
Rec. Hydraulic pressure open/close: (psi):	3050/3625	3050/3625	3050/3625	3050/3625	3050/3625
Max hydraulic pressure: (psi)	3625	3625	3625	3625	3625
Base machine weight: (metric t)	6–11	6–11	12–19	16–30	25–33

TOOL SYSTEMS FOR INCREASED PROFITABILITY

engcon North America Inc. 222 Elm street #4, North Haven, CT 06473
Phone (646) 851 0104 | Email northamerica@engcon.com | www.engcon.com