

S-Quick hitch

For all excavators in the 1–6 tonne weight classes

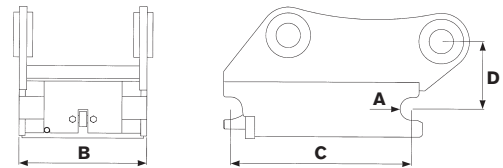
- » Designed for tiltrotator digging – the digging forces are distributed through the body of the hitch, not the hitch ram.
- » Hydraulic locking for speedy attachment and tool changes straight from the cab.
- » Play-free connection.
- » Robust, reliable and value-for-money.
- » Low installation dimensions.
- » Low weight.
- » Welded, high-strength steel.
- » Can be supplied with hydraulic or mechanical locking.



Specifications

| Typ | S30 | S40 |
|--|--------|--------|
| Axle diameter: (mm) | 30 | 40 |
| Width: (mm) | 180 | 200 |
| Length: (mm) | 230 | 300 |
| Construction height: (mm)* | 110 | 110 |
| Weight: (kg)* | 15 | 25 |
| Recommended hydraulic pressure open/closed | 21/3–6 | 21/3–6 |
| Max hydraulic pressure: (MPa) | 22 | 22 |
| Base machine weight: (t) | 1–2 | 2–6 |

*Depending on attachment



CHANGE THE WORLD OF DIGGING