

Quick hitch

Robust quick hitches that last

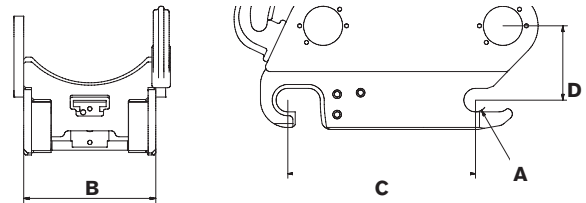
With reinforcement in both the lateral and digging directions, you get a robust solution that provides increased stability – something that is noticeable in a smoother and more comfortable driving experience.

In addition, the routing of hoses between the excavator and the attachment is improved and more flexible for optimal function. The smart design reduces environmental impact and the risk of leaks, which means fewer downtimes and higher efficiency.

EC-Oil blocks without hoses provide maximum service life and make service, maintenance, and retrofitting both easier and faster.

Best of all, EC-Oil is always included in the price of our S45–S80 quick hitches. (Optional extras for the S40)

With quick hitches from engcon, you get more power, less hassle, and maximum efficiency – every day.



Technical data

Type	S30	S30	S40	S40	S40	S45	S60	S70	S80
Automatic *					✓	✓	✓	✓	✓
Hydraulic **		✓		✓					
Mechanical ***	✓		✓						
Axle diameter A (mm)	30	30	40	40	40	45	60	70	80
Width B (mm)	180	180	200	200	200	290	340	450	590
Length C (mm)	230	230	300	300	300	430	480	600	670
Build height D (mm)	110	100	110	110	135	140	185	205	270
Weight (kg)	20	20	25	25	50	100	180	290	370
Recommended hydraulic pressure open/close (MPa)	–	21–25	–	21–25	21–25	21–25	21–25	21–25	21–25
Max hydraulic pressure, Aux (MPa)	–	–	–	–	35	35	35	35	35
Base machine weight (t)	1–2,5	1–2,5	2–4	2–6	2–6	6–11	12–19	20–30	27–40

* **Automatic:** Our automatic hitches are fully hydraulic and allow you to change tools easily and smoothly without leaving the cab.

** **Hydraulic:** Our hydraulic hitches require hydraulics but need some manual handling to connect and disconnect hydraulic and electrical connections.

*** **Mechanical:** Our mechanical hitches work without hydraulics and with minimal manual handling.

CHANGE THE WORLD OF DIGGING