

S-Quick coupler

For all excavators in the 2,200-13,230 lbs weight classes

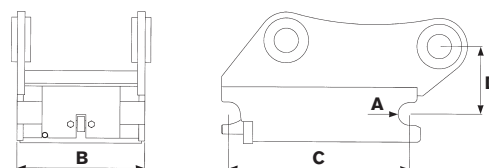
- » Can be supplied with hydraulic or mechanical locking.
- » Hydraulic locking for speedy attachment and tool changes straight from the cab.
- » Play-free connection.
- » Changeable for deep and shallow digging.
- » Robust, reliable and affordable.
- » Low installation dimensions.
- » Low weight.
- » Welded, high-strength steel.



Specifications

Model	S30	S40
Axle diameter: (inch)	1.2	1.6
Width: (inch)	7.1	7.9
Length: (inch)	9.1	11.8
Construction height: (inch)*	4.3	4.3
Weight: (lbs)*	33	55
Recommended hydraulic pressure open/closed (psi)	3050/435-870	3050/435-870
Max hydraulic pressure: (psi)	3200	3200
Base machine weight: (lbs)	2200-4410	4410-13230

**Depending on attachment*



CHANGE THE WORLD OF DIGGING

engcon North America Inc. | 2666 State Street, Hamden CT 06517
Phone +1 203 691 5920 | **Email** northamerica@engcon.com | **Web** engcon.com