

Cable bucket

For all excavators between 3,300–72,700 lbs (1.5–33 metric ton)

engcon's cable bucket – developed for precision excavation with minimal width for e.g. cables or other services requiring narrow trenches. Its deep profile means better accessibility beneath intersecting cables and pipes and also allows deep trenching without any need for the tiltrotator to go below surface level.

engcon's cable buckets are available in two models
– **Standard and tapered (C)**

Standard is the conventional type with straight side plates for excavating ditches with vertical sides.

The tapered model has a narrower blade than the standard cable bucket but with the same width top, producing a narrower trench bottom with slightly sloping sides.

engcon's cable buckets are made from high-quality steel. As with other engcon buckets, the cutters and other exposed wear surfaces have a hardness of 500 Brinell.

A factory-installed tooth kit is available as an optional extra.



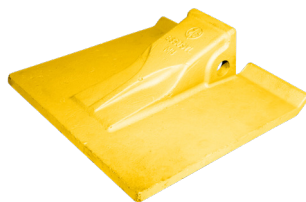
Standard



Conical



Tooth kit, type Cat



Blade teeth provide smooth ditch bottoms

Specifications

Model	CB01	CB03	CB03	CB05	CB05	CB08	CB10
Volume (y³):	0.05	0.12	0.12	0.17	0.17	0.20	0.21
Width (inches):	9.4	11.4	11.4	13.4	13.4	15.7	18.1
Weight (lbs):	55	121	121	154	187	209	352
Top bracket:	S30	S30	S40	S40	S45	S45	S45
Base machine weight [lbs]:	3,300 –4,400	4,400 –8,800	4,400 –8,800	8,800 –13,200	8,800 –13,200	13,200 –22,000	17,600 –28,600

Model	CB15	CB15C	CB20	CB20	CB25	CB25	CB29	CB29
Volume (y³):	0.46	0.46	0.52	0.52	0.72	0.72	1.05	1.05
Width (inches):	22	11.8	26	26	23.6	23.6	27.6	27.6
Weight (lbs):	638	561	704	792	1,298	1,353	1,640	1,713
Top bracket:	S60	S60	S60	S70	S70	S80	S70	S80
Base machine weight [lbs]:	28,600 –37,400	28,600 –37,400	37,400 –48,500	37,400 –48,500	48,500 –59,500	48,500 –59,500	59,500 –72,700	59,500 –72,700

CHANGE THE WORLD OF DIGGING