



# TILT & ROTATE

ENGCON NEWS | #1 2026

## NEWS SERIES 1, 2 & 3

THREE DIFFERENT  
LEVELS OF  
PERFORMANCE

**4** | SWEEPING CLEAN WITH THE  
ENGCON SWEEPER ROLLER

**22** | LESS CABLING,  
GREATER CAPACITY

**24** | PRACTICAL EXPERIENCE  
DRIVING PERFORMANCE



CHANGE THE WORLD OF DIGGING

# There's an engcon for everyone

As engcon continues to drive innovation within the excavator industry, we are now seeing an exciting change – new terminology and greater clarity regarding our tiltrotators.

The tiltrotator has long been at the heart of engcon's offering. It turns the excavator into a flexible tool carrier, saves time, reduces fuel consumption and increases safety on the job site. But with a growing global market and more products, we need a language that is as smart as the technology. Our new way of presenting our tiltrotators will make it easier for you, the customer, to choose the right solution for your needs.

## From now on, Series 1, 2 and 3 represent three different levels of performance:

**Series 1** is the first step into the world of tiltrotators and delivers basic tilt and rotation for immediate precision, efficiency and profitability.

**Series 2** is our flexible all-in-one solution that boosts productivity and simplifies daily work, with EC-Oil as an option for optimised tool handling.

**Series 3** is the ultimate tiltrotator experience with EC-Oil, future-proof technology that makes excavation work smarter, smoother and more efficient.

With these new names, we don't just want to simplify – we want to inspire. The tiltrotator is more than just an attachment; it is a symbol of smarter, safer and more sustainable excavation. As we now take the next step in our journey, it is about giving the technology a language that matches its significance. This is how engcon is changing the world of excavation.



**Martin Engström**  
Product Manager,  
engcon AB



**SCOTPLANT**  
EDINBURGH, UK  
» 24-25 APRIL

**ICE EXPO**  
PUNCESTOWN, IRELAND  
» 22-23 MAY

**HILLHEAD**  
BUXTON, UK  
» 23-25 JUNE

SEE ALL OUR  
UPCOMING  
EVENTS



**Stay up-to-date**  
– follow us on  
social media



**FACEBOOK**  
engconUK



**YOUTUBE**  
engconDotCom



**INSTAGRAM**  
engcon\_uk



**FLICKR**  
engcon

## EDITORIAL STAFF

**Editor-in-chief:** Viktoria Winberg **Writers:** Paul Argent, Viktoria Winberg, Moa Lundqvist  
**Photographers:** Paul Argent, Magnus Wattman, Moa Lundqvist **Layout:** Maria Skogen

ENGCON IS GROWING STEADILY

# You are part of the journey

2025 has been an important year for engcon. We have continued to develop our products and increased our market share worldwide. We have met satisfied end customers at trade fairs and demonstration days. And the future looks bright – according to a new market study, the global tiltrotator market is expected to grow by 20% by 2030 – and you are part of that journey!

There are many factors that shape our future. The construction industry is changing rapidly. Digitalisation, sustainability requirements and new rules mean we have to think smart and stay one step ahead. That is exactly what we do – together with you, who use our products every day.

We are investing in connected tiltrotators that make the job easier and more efficient. Our latest model works not only with electric machines, but also with autonomous and semi-autonomous excavators. This is the future – and we are already there.

The construction industry accounts for a significant amount of emissions, and this is where we can make a difference. With engcon, the need for multiple machines is reduced, saving both money and fuel. The urban environment is another interesting sector facing major challenges. Construction in dense urban

environments requires precision and flexibility. The tiltrotator turns the excavator into a versatile problem-solver that saves time and delivers better results for you.

There is a shortage of labour in the industry, which is why it is important that machines do more. With a tiltrotator, you avoid unnecessary manual tasks and get the job done faster. This means satisfied customers and projects that stay within both budget and schedule.

We know that safety is paramount. Our control systems and features are designed to minimise risks and create a safe working environment. Stricter requirements mean that the right equipment is a must – and that's where we're at the forefront for you.

All of this together means that we can truly transform the world of excavation, grow and maintain our leading position – and you're part of it!





BROSSEN AB IN FALUN, SWEDEN

## **Sweeping clean with the new sweeper roller from engcon**

It is a chilly November morning and the plan for the day is a visit to Brosse's rock-crushing plant just outside Falun. Brosse's owner, Per-Erik 'Perra' Gustavsson, meets us and invites us in for a cup of coffee at the office, which is located at the entrance to the plant.



- I joined the business as a gravel sales representative in 2018. After a short while, I was asked if I wanted to take over the entire business. It felt quite natural, as I had also worked in gravel sales previously.

When the takeover became a reality, the focus was mainly on blasting, and the business consisted of two employed blasters. Today, things look different. Gravel sales and materials recycling make up a large part of the business, and everything is run as a family business.

Perra's wife is in charge of the finances, and his son Albin works on planning drilling operations, measuring retaining walls and holes, and documenting blasting operations. The work has also been digitised. Using

drones and advanced software, Albin creates three-dimensional models of how the site is developing. When time and need arise, he also steps in as a machine operator.

The coffee has been drunk and now it's time to head out to see the business and, above all, check out how the new waste compactor from engcon works. We come across a convoy of lorries that have just had their beds filled with gravel by a Cat 980 and a Volvo L180, which are both filling the company's sorting plant and loading lorries in turn. We pass the wheel loaders and drive up onto a ledge where several excavators are preparing to blast a new bench.

"The rock must be completely clear of loose material

before we can blast, and when we saw engcon's low-flow-requiring waste roller, we thought it should work to run it on the feed under the tiltrotator," says Perra.

Excavator operator Kenta Alm takes care of the rough clearing first with a Cat 340. First, he digs away the loose material as far as possible. Then he sweeps a lorry tyre against the rock face. A large portion of the loose material comes away with it.

- It works well to clear the first pass like this. But to get it really clean, it needs to be swept and sometimes blown with compressed air, explains Kenta.

Once the rough clearing is done, it's Wille Kilde's turn to take over with a Volvo EC240 fitted with a knuckle boom, an engcon EC226 tiltrotator and the new sweeper roller.

- We've only just started using the sweeper roller and it seems to work really well in combination with the tiltrotator. It really gets to grips with the material, says Wille after sweeping part of the rock face.

Wille follows the uneven rock face with gentle movements and, thanks to the tiltrotator, he is able to sweep in all sorts of positions.

” The new waste compactor looks set to become a key part of the process, as it makes a big difference and reduces the amount of follow-up work required.

**WILLE KILDE**

“The new sweeper roller looks set to become an important part of the process as it makes a big difference, meaning less finishing work and a result that will also satisfy the blasters,” concludes Wille with satisfaction.

Watch the video from  
Brossen AB





## FACTS

BROSSEN AB,  
SWEDEN

**CEO & Owner:** Per-Erik "Perra" Gustavsson

**Employees:** 9

**Turnover:** SEK 48.6 million (2024)

**Fleet:** Four wheel loaders, six excavators, one crawler excavator and two sorting plants. During the summer months, Brossten also hires out several of its excavators for external contracts.

**Operations:** Blasting, loading, gravel sorting, material recycling.





ENGCON AND KOMATSU

## **Enhanced integration through seamless tiltrotator technology**

engcon is strengthening its collaboration with Komatsu to deliver greater efficiency and convenience for excavator operators. This partnership focuses on simplifying installation and reducing overall costs for end users of the Komatsu Dash 12 series.

“This collaboration marks a significant step toward smarter, more efficient excavation solutions, combining Komatsu’s advanced machine control with engcon’s tiltrotator technology,” says Sam Ryan, Global OEM Manager, engcon.

In this solution, engcon DC3 tiltrotators will integrate with Komatsu’s advanced systems, delivering superior precision and responsive control. This powerful combination unlocks the full potential of Komatsu’s intelligent Machine Control 3.0, offering semi-automatic control of the rotation and tilting of the bucket. It also includes features such as posture hold control, which automatically maintains attachment orientation. Connectivity is enhanced through engcon’s mobile app,

remote support, and smart tool programs, ensuring operators stay in control at all times.

“Komatsu is committed to enabling the seamless integration of attachments that offer significant customer value. Through partnership with engcon, we are advancing our commitment to provide integrated solutions that help customers work more productively and flexibly,” says Rob Macintyre, Product Manager at Komatsu Europe.

The Komatsu Dash 12 series – currently including PC220LC-12 and PC220LCi-12 – will soon expand with additional Dash12 models upon release.

The logo for Engcon, featuring the word "engcon" in a bold, lowercase, sans-serif font. The letters are black and are set against a bright yellow rectangular background. A registered trademark symbol (®) is located at the top right of the word.The logo for Develon, featuring the word "DEVELON" in a bold, uppercase, sans-serif font. The letters are black and are set against a white background.

ENGCON AND DEVELON JOIN FORCES

## **Launch Tiltrotator-Ready 9 series excavators**

engcon announces the integration of its advanced tiltrotator technology with Develon's latest excavator models, the DX230LC-9 and DX260LC-9. With this collaboration, the new Develon 9 series excavators will now be delivered tiltrotator-ready, setting a new standard for ease of installation and operational efficiency.

The factory-prepared solution ensures a straightforward and time-efficient installation of engcon DC3 tiltrotators, significantly reducing the need for complex retrofitting. The integration supports both engcon sandwich solutions and direct-mounted DC3 tiltrotators, while maintaining full compatibility with Develon's 2D machine guidance systems and aftermarket 3D machine control systems.

For rental companies, this development provides a decisive advantage. Tiltrotator-ready excavators allow fleets to easily equip or interchange tiltrotators as needed, maximizing machine flexibility and utilization while simplifying fleet management. End users renting these machines benefit from immediate access to tiltrotator functionality, enabling higher productivity and efficiency from day one.

"This collaboration with Develon allows us to provide a more advanced and integrated solution for our end customers, while delivering a simplified installation process for our dealers and rental partners", says Sam Ryan, Global OEM Manager at engcon. "By ensuring the Develon 9 series excavators are tiltrotator-ready, we make it easier than ever to adopt tiltrotator technology on a global scale", he continues.

The partnership reflects a broader industry shift toward closer collaboration between excavator manufacturers and tiltrotator specialists, ensuring machines are designed to deliver maximum efficiency and productivity as standard.

# An engcon for everyone

It's now easier than ever to choose the right tiltrotator from engcon. With our new way of presenting our product range, we're making the differences between the various models clear. This helps and inspires you to find the perfect solution more quickly.

**From now on, Series 1, 2 and 3 represent three different performance levels.**

**Series 1** is the first step into the world of tiltrotators and offers basic tilt and rotation functions.

**Series 2** is our flexible all-in-one solution that boosts productivity and streamlines daily work, with EC-Oil as an option for optimised tool handling.

**Series 3** is the ultimate tiltrotator experience with EC-Oil, featuring future-proof technology that makes digging smarter, smoother and more efficient.

**There's an engcon for everyone.**

Comparison	Series 1	Series 2	Series 3
Direct connect	✓	✓	✓*
Sandwich	✓	✓	✓
Tilt	✓	✓	✓
Rotation	✓	✓	✓
EC-Oil	-	✓**	✓
ePS sensor	-	✓***	✓
Load sensing	-	-	✓
Auto calibration	-	-	✓
SS0	✓	✓	-
SS1	✓	-	-
SS9	-	✓	-
DC2	-	✓	-
DC3	-	✓	✓

\* EC314–EC333 only as sandwich.

\*\* Standard, but can be ordered without.

\*\*\* Standard, but can be ordered without.

Applies to EC204–EC209.

Find out more  
on our website



## SERIES 1



## The simple and smart choice

Your first step into the world of tiltrotators, with core functions such as tilt and rotation.

Series 1 tiltrotators are designed for the smallest and most compact excavators on the market, up to six metric tons. With unlimited rotation and a tilt angle up to  $\pm 45^\circ$ , Series 1 ensures optimal control in any terrain or working conditions, such as narrow spaces and landscaping.

This model is ideal for operators who prefer simplicity, as it does not require an advanced control system. Series 1 works directly with the excavator's own hydraulic system, making installation and operation straightforward and efficient.

Series 1 comes equipped with a mechanical quick hitch and supports both direct mounting and sandwich solutions. It offers essential functionality for those new to tiltrotator technology, reducing the need for machine repositioning while increasing precision.

## SERIES 2



## Performance and flexibility

Series 2 is our most flexible, full-range solution that increases productivity and streamlines everyday work, with EC-Oil as optional for optimized tool handling.

Powerful tiltrotators designed to combine low weight and height with exceptional performance, for excavators up to 33 metric tons. It offers unlimited rotation and a tilt angle of up to  $\pm 45^\circ$ . Series 2 includes EC-Oil as optional, allowing the operator to connect the tiltrotator and hydraulic tools from the cab.

Safety and efficiency are prioritized through features such as the Q-Safe quick hitch, and load-holding valves on tilt cylinders. Series 2 is prepared for detachable tools like gripper and sweeper, as well as the locking system and sensors for excavator guidance integration\*. Central lubrication simplifies maintenance and ensures correct oil levels.

Series 2 supports direct mounting or sandwich solutions and offers a variety of hydraulic quick hitches.

*\*ePS sensor standard for 214-233  
(N/A 202)*



## The latest technology

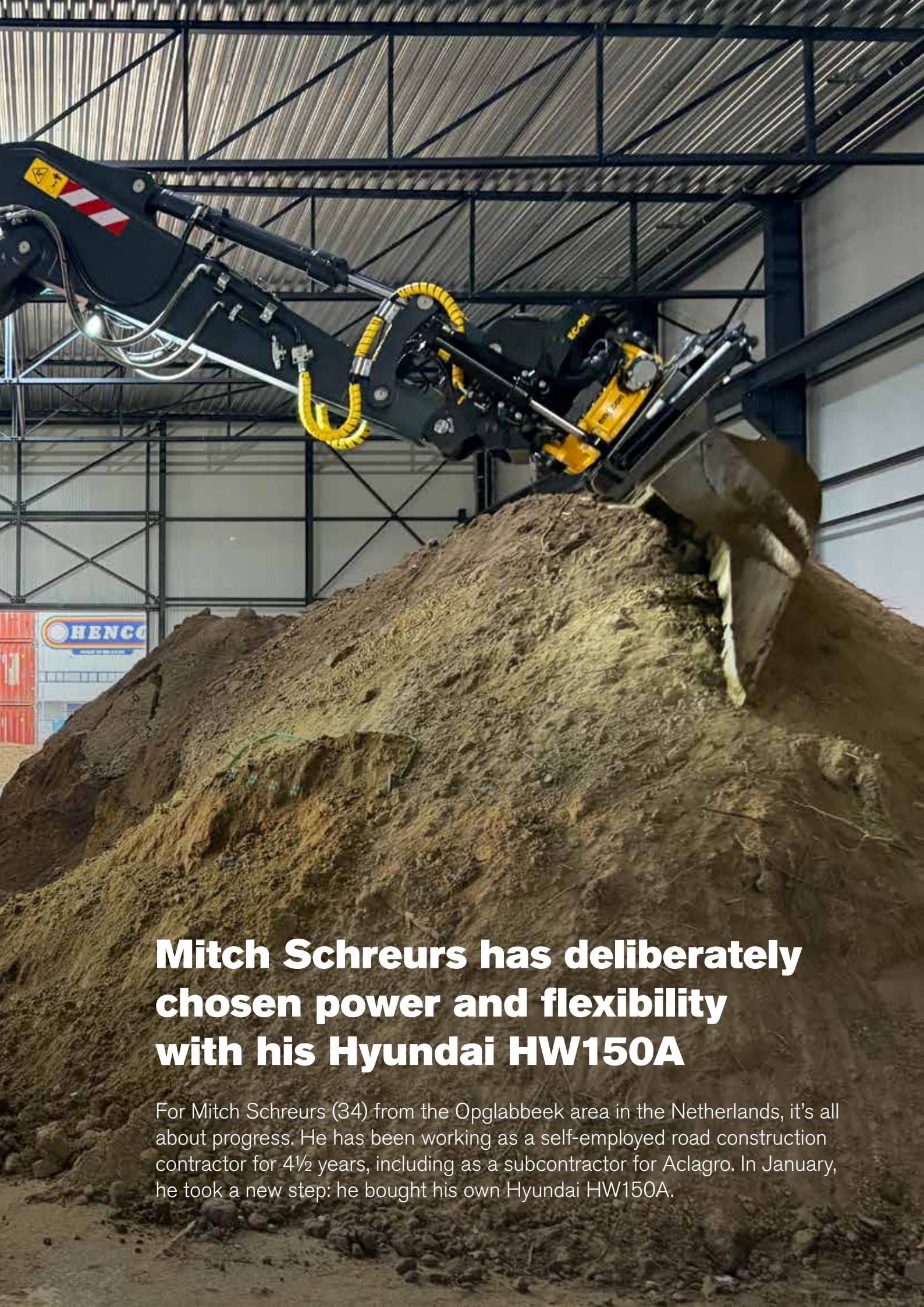
Series 3 is the ultimate tiltrotator experience with future-ready technology, featuring personalized settings and prepared for advanced functions such as return-to-zero, with upgrade capability for tool recognition.

The most advanced tiltrotator option for excavators up to 33 metric tons. It delivers more responsive digging and increased precision, making excavation work smoother, smarter and more efficient. Load-sensing hydraulics and energy-efficient technology can save 30% or more energy compared to Series 2. It is ready for electric machines and is sold as a complete engcon system.

Series 3 offers unlimited rotation and a tilt angle of up to  $\pm 45^\circ$ , ensuring maximum flexibility in all conditions. EC-Oil comes as standard, allowing hydraulic tools to be connected from the cab. The system comes with tilt- and rotation sensors pre-installed and supports detachable tools such as gripper and sweeper.

Series 3 also offers advanced functionality, Bluetooth connectivity and app support for iOS and Android.





## **Mitch Schreurs has deliberately chosen power and flexibility with his Hyundai HW150A**

For Mitch Schreurs (34) from the Opglabbeek area in the Netherlands, it's all about progress. He has been working as a self-employed road construction contractor for 4½ years, including as a subcontractor for Aclagro. In January, he took a new step: he bought his own Hyundai HW150A.

A conscious investment. Just like his choice of an engcon EC219 quick coupler.

“As a self-employed person, you need to be confident in your equipment. Downtime is not an option.”

### **From an internship to his own machine**

His passion for the trade began during his internship with his very first employer in the Netherlands. He then gained experience with various employers, all in Dutch Limburg. The ambition to become self-employed had always been there, but partly on his father's advice, Mitch took the time to develop his skills further before taking the somewhat uncertain step towards self-employment. “Four and a half years ago, the time had finally come to take the plunge. For love, and because I'd actually always wanted to live there, I moved to Belgium and set up my own business. For the first few years, I didn't have my own crane, until last year. That's when I decided it was time; my own vision and way of working also called for my own machine.”

Mitch sought advice from dealers of various brands. It was clear that the machine needed an engcon, but the final choice of a Hyundai came about, naturally, not only because the HW150A met all requirements and wishes, but particularly due to the very pleasant collaboration with sales representative Marc Knapen and workshop manager Tim Boecktaens of HMB Hyundai Belgium. The machine was fitted with a detachable engcon EC219 on an S60 quick-change coupler, with a detachable gripper and DC2 proportional control via the MIG-2 joysticks.

At HMB, the preference for engcon is now very clear. An internal decision was made to always offer engcon as the first choice from now on, following previous less positive experiences with premature wear and leaks with the competing brand of tiltrotator previously offered. “They are fully behind engcon as their preferred supplier; I could tell that from everything. And that was a very important point for me because I've always been engcon-minded; for me, there was no other option.”

### **Matexpo Demo Days as a starting point**

Mitch's first encounter with engcon came at the Matexpo Demo Days in 2022. There, he spoke with Danny Knippenberg, who had just joined engcon and explained the story behind engcon's quality. “What stuck with me? The combination of strength and durability. In road construction, you're working with rough materials and in demanding conditions. So your equipment has to be able to take a beating.” That personal contact built trust. No sales pitch, just an honest explanation. For Mitch, that was the deciding factor.

### **Detachable and flexible**

The choice of a detachable EC219 was deliberate. “I wanted flexibility and to be as versatile as possible for my clients. Sometimes you need the tiltrotator, sometimes you don't. So it's handy that you can detach it quickly.”

“And you know what else I do – and I'm told I might be a bit stubborn about this: I take the grapple off if, for example, I have to work right up against a wall where I don't need it, but there's a risk I might damage it. After all, removing that grapple takes less than a minute, and I take great care of my equipment, so why wouldn't I make the effort?”

He is currently still working with a GP bucket, but wants to swap this for an engcon bucket as soon as possible, so that the combination is even more perfectly matched. “The engcon buckets are really designed for working under a tiltrotator, including the rounded corners for working along walls.”

### **Efficiency on site**

Mitch works in the Opglabbeek region, among other places, and carried out the groundworks for a large warehouse in Herentals; a project that is currently in its final stages. Typical road construction sites, where precision and speed come together.



“With the tiltrotator, you have to move your crane much less. You simply rotate and tilt where you are. That works faster and more smoothly.” That smoothness is important. Less repositioning means less wear and tear, lower fuel consumption and less stress on site. It also reduces manual labour. “You can do much more from the cab. That’s safer and less physically demanding. And I can really help the groundworkers with the grapple, so they’re happy with me too.”

### **Precision with rollers and app**

Mitch works with rollers in the machine controls and uses the accompanying app. “It takes some getting used to at first, but once you’ve got the hang of it, you wouldn’t want to be without it.” The proportional control ensures precise movements, especially during finishing work. “Small corrections are smooth. You can see that in the end result.” The app provides extra control and insight into the system. “You always know what’s happening and can, for example, adjust the gripper’s speeds.”

### **More than just an extra feature**

For Mitch, a tiltrotator isn’t a luxury, but a logical part of his machine. “It increases your versatility. You can take on more types of work.”

That means flexibility for clients. “They see that you work efficiently. Neatly, quickly and with fewer staff. That makes an impression.”

And ultimately, that’s what it’s all about: gaining trust on site.

### **Looking to the future**

With his Hyundai HW150A and engcon EC219, Mitch has a combination he can rely on, supplied by suppliers he trusts. “I want to keep growing. Take on great projects. And work with equipment that makes me stronger.”

His advice to fellow operators is clear: “You have to experience it for yourself. As soon as you start working with it, you understand the difference. It makes your work easier, more precise and more profitable.”

For Mitch, the conclusion is simple:

“If you’re in your crane every day, it has to be right. So you choose a machine that helps you get ahead. And a tiltrotator that gets the most out of it.”





ENGCON'S NEW DC3 CONTROL SYSTEM

## **Now compatible with Cat wheeled excavators**

engcon is strengthening the global tiltrotator market by enabling seamless installation on Caterpillar's Next Gen (NG) wheeled excavators. The solution will be available on the market from February 2026.

In addition to Caterpillar's crawler excavators, which have featured this solution for some time, the Caterpillar M314 NG–M322 NG models now offer quick installation of engcon's tiltrotators. This is thanks to engcon's DC3 control system and Cat's Software Enabled Attachment (SEA) technology. DC3 is engcon's latest control system for tiltrotators, built on a completely new hardware and software platform. DC3 simplifies installation via the excavator manufacturer's interface compared to traditional solutions.

"With increasing global demand for our products, it is crucial for us to make our products more accessible to our end customers. At the same time, it is equally important to ensure that the customer gets the full potential out of both the excavator and the tiltrotator. This solution makes it much easier to enter the tiltrotator market," says Sam Ryan, Global OEM Manager, engcon.

This launch reflects a clear trend within the industry; excavator manufacturers are making advanced attachments increasingly accessible. This plays a crucial role in increasing market penetration and enabling higher levels of machine utilisation and efficiency. When all functions are utilised to the full, excavation work becomes both smoother and saves time.

For more information on the latest launch, contact your local engcon dealer or Cat dealer.



## ENGCON AND VOLVO CE **Make circular innovation a reality**

engcon is leading the way in circular innovation through a new groundbreaking project. Together with Volvo CE, Mälardalen University and Stena Circular Consulting, engcon is participating in the Vinnova-funded project – Advancing Circular Lifecycles in Construction Equipment (CIRCLE-E) – with the aim of creating new business models and technical solutions that make circularity a natural part of the construction and civil engineering industry.

“This is an important step in engcon’s sustainability work. Our previous initiatives, such as joining the Science Based Targets initiative (SBTi) and the UN Global Compact, have laid the foundations. With CIRCLE-E, we are taking the next step to drive the industry towards more circular and resource-efficient solutions,” says Helena Nydahl, Sustainability Strategist at engcon.

CIRCLE-E addresses one of the most under-researched challenges in the construction industry: how we manage the end of the life cycle for machines and components in a way that preserves value, reduces environmental impact and creates new opportunities for reuse and recycling. By combining research, design feedback and business development, the project aims to develop methods and insights that can be scaled – not only within construction machinery, but also in other industries.

“For engcon, this initiative is not just about sustainability; it is about creating business value through innovation and collaboration. Our vision is to transform the world of excavation and to always be at the forefront of technology. Innovation happens when we work

together and challenge traditional ways of working. By developing solutions that combine business value with sustainability, we can create long-term value for customers, the industry and society,” says Krister Blomgren, CEO of engcon.

Volvo CE is also eagerly looking forward to the upcoming project:

“There is no doubt that tomorrow’s construction must be based on circular thinking to meet the challenges that are already reshaping our societies. This fundamental shift away from traditional methods is why research projects such as CIRCLE-E are so crucial. When industry and academia come together, innovation gains momentum, and ideas are transformed into scalable circular business models and practices in the real world – essential building blocks for taking steps in the right direction,” says Sander Jahilo, Head of Resource Sustainability at Volvo CE.

The project will run from 2026 to 2028 and is expected to deliver new service concepts, strategies for reuse and recycling, and a basis for industry standards and policy development.

The logo for engcon, featuring the word "engcon" in a bold, black, sans-serif font with a registered trademark symbol (®) to the upper right, all contained within a bright yellow rectangular background.

ENGCON AND TM BENNE

## **Strategic partnership to strengthen our presence in the Italian market**

engcon is entering into a strategic partnership with the Italian company TM Benne. Under the partnership, TM Benne will market and sell engcon's products in the Italian market.

TM Benne specialises in the manufacture of buckets and attachments and has strong local roots combined with a high level of technical expertise. Their expertise makes them a key strategic partner for engcon in the Italian market. Through this partnership, engcon is strengthening its presence in the country and meeting the growing demand for efficient and sustainable solutions within the construction and civil engineering industry.

"We look forward to starting our collaboration with TM Benne. Their experience and strategic network make them an ideal partner for our expansion in Italy and are perfectly in line with our vision to transform the world of excavation," says Krister Blomgren, CEO of engcon.

"We are very pleased with the partnership with engcon. Interest in the tiltrotator in Italy is growing, and together we can create the conditions for strong growth in the Italian market," says Marco Franchi, CEO of TM Benne.

The launch of engcon's products in Italy via TM Benne will begin in the fourth quarter of 2025.

### **About TM Benne:**

The company has been in operation since 2004 and specialises in the manufacture of buckets, attachments and tools for excavators. TM Benne is headquartered in Città di Castello and operates throughout Europe.

# Less cabling, greater capacity

engcon's service contractors travelled from far and wide to High Point in North Carolina in November to learn the finer details of installing engcon's new DC3 control system during the opening of the company's new facility.

For Jordan Williams from GPS Alaska in Anchorage, Alaska, the long journey was well worth the effort. He and around 16 other engcon service representatives from various parts of the US and Canada worked alongside engcon's service engineers during a full day of practical training. The new DC3 system offers a smoother and more reliable experience for operators, but it was the reduced number of parts, the less complicated installation and the simple troubleshooting that really impressed the installers. Williams, who had previously installed the DC2 system, felt that the upgrade is a major step forward.

"It's going to be much simpler," said Williams as he leaned against an engcon tiltrotator in the company's new 66,000-square-foot warehouse, not far from Raleigh, North Carolina. "Everything is more plug-and-play with cabling instead of all those different special connectors. There's much less cabling running into the machine." "I still don't understand how they managed that," he said, clearly impressed.

The visiting service representatives installed the DC3 control system on two different excavators as well as on two John Deere machines, a 60 P-Tier and a 26-P. They were supervised by five engcon service engineers, three from the US and two from Sweden.

– It was hands-on training, said senior service engineer Brett Mallon. Everyone gained experience in computer work, troubleshooting and installation.

Williams recalled GPS Alaska's first delivery from engcon.

– When we received our first system in Alaska, we opened the boxes and it was overwhelming how much was in there. We were quite confused and generally overwhelmed. It was like: "What have we got ourselves into?"

But when he walked into the warehouse in High Point and saw what was laid out for his DC3 installation training, he thought: "Wow, this is half as much as the DC2."

– Many of the new cables and connectors are significantly more robust. The cables seem much stronger," he said. A bit better protection, so it feels like they'll last much longer.

The DC2 system has been in use since 2012, and demand for a more streamlined, modern and efficient control system prompted engcon's engineers to begin work on the DC3 around five years ago. Furthermore, the DC2 only worked with Android phones, whereas the DC3 also works with Apple devices. For senior service engineer Mallon, this is a major advantage.

Now, operators can communicate with their engcon and even control functions and settings, regardless of which phone platform they use.

"Everything is right there on their phones," he said, "and if a problem arises, a service engineer can also connect remotely."

"We can recalibrate, raise threshold values, lower pressure, troubleshoot and, in nine out of ten cases, resolve the issue whilst we're connected," said Mallon.

During the training, Boyce found it interesting to see how engcon's service experts handled installation and troubleshooting. Looking ahead, the DC3 has been developed with a focus on efficiency, particularly given the growing trend in Europe towards electric excavators, which are projected to generate \$3.5 billion in revenue by 2025.

Electric excavators, with fewer moving parts than diesel engines, lower maintenance, zero emissions and low noise levels, are expected to capture a significantly larger market share over the coming decade. The efficiency of the DC3 system will be part of that development, but will also enhance all existing diesel excavators currently using engcon.



“

I can see the future now. I can see that it's actually much simpler ... there's far less cabling involved.

**DEVIN WENTWORTH**

D.W. Diesel Repair  
Charleston, South Carolina



“

I've already booked one for next week. When I first heard about the new DC system, I was honestly really excited about it, because I love new things ... I love mechanics, I love electronics.

**GERRIN BOYCE**

Owner/operator  
G Boyce Enterprises  
South Easton, Massachusetts



“

It was practical training. Everyone gained experience with computers, troubleshooting and installation.

**BRETT MALLON**

Senior Service Engineer  
engcon



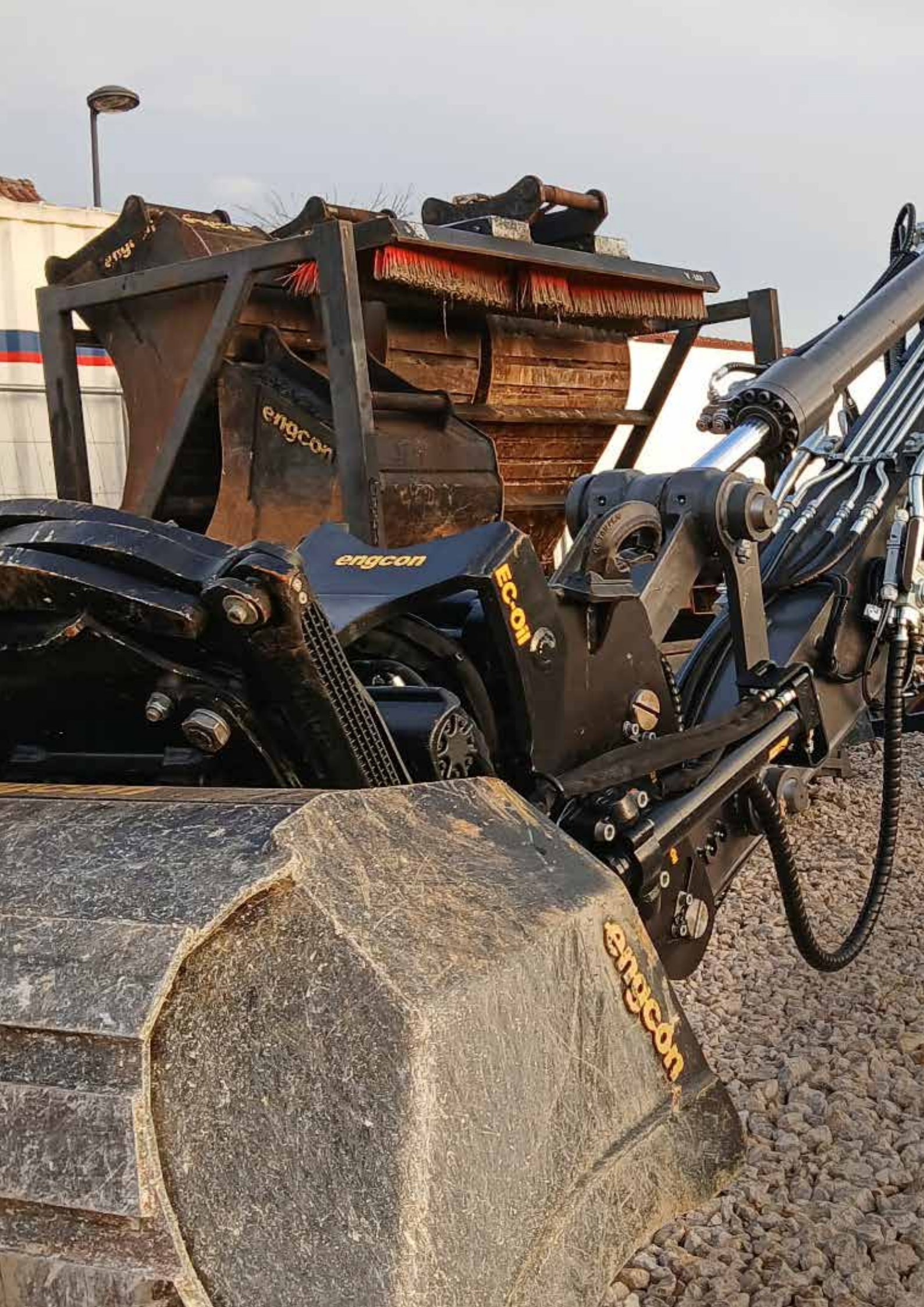
“

We decided to invite all our service partners to a training session on the new CAN bus control system that we are set to launch here in the US in 2026. And this is the first time we've had them all together.

**ÅKE JOHANSSON**

Senior Service Engineer  
engcon





engcon

engcon

engcon

EC-011

engcon



## **Practical experience driving performance**

Pascal Sutera Sardo relies on engcon to  
optimise its construction sites.

In a sector where productivity, precision and versatility have become essential in public works, innovative solutions are proving to be key drivers of performance. Pascal Sutera Sardo, director of 2STP, shares his experience of using engcon tiltrotators, which he has been using on his sites for several years.

"I am now completely satisfied with the product. This is my fifth engcon tiltrotator, and I wouldn't swap it for anything in the world," he says.

### **A solid track record and recognised expertise**

With 32 years' experience in public works, including 16 years as a self-employed contractor, Pascal Sutera Sardo founded 2STP in July 2011. Specialising in subcontracting for major contractors, the company operates mainly in Meurthe-et-Moselle (54), Moselle (57) and Haute-Marne (52).

Working alone, Pascal personally operates his machinery and oversees his sites, mainly in roadworks and earthworks, with a constant focus on quality and precision.

**” I am now completely satisfied with the product. This is my fifth engcon tiltrotator, and I wouldn't swap it for anything in the world**

PASCAL SUTERA SARDO

### **Discovering engcon**

His introduction to engcon technology dates back several years:

"When I was a site manager, a colleague was using one of the first engcons in France. I immediately saw the potential of the tool."

Impressed by the possibilities on offer, Pascal quickly took the plunge with his first investment, drawn in by a comprehensive and coherent package right from the start, as well as a desire to explore new technologies.

### **Equipment that has become indispensable**

Initially fitted with an engcon DC2 tiltrotator with EC-Oil, his MECALAC 15MWR allows him to make full use of the machine's capabilities, particularly thanks to the QSC, QLM Black Edition and EPS options. Today, he is

continuing this approach by replacing his machine with a VOLVO EWR130E, again fitted with engcon.

"As an operator, I couldn't work without a tiltrotator. The manoeuvrability and time savings are considerable."

### **Increased versatility on site**

Thanks to the tiltrotator, Pascal has expanded his range of applications, particularly in urban environments:

- Roadworks
- Earthworks
- Precision adjustment
- Guidance
- Complex urban works

He regularly uses a wide range of engcon equipment: SG12, GRD60, buckets, dozer blade and sweeper, allowing him to quickly adapt his machine to any situation.

### **Quick to get to grips with and much-appreciated support**

The handover was gradual, with 2 to 3 weeks needed to adapt fully. A delay quickly offset by gains in productivity and everyday comfort.

"The product is as good as the team at engcon France. The support really makes all the difference."

### **Concrete projects ahead**

Upcoming projects include a cycle path scheme, involving the creation of ditches, embankments and drainage works. Operations for which the precision and versatility of the VOLVO EWR130E / engcon combination will be put to full use.

### **engcon, a sustainable choice**

For Pascal Sutera Sardo, engcon is no longer an option but an obvious choice:

"I still get just as much pleasure from using engcon and its tools. I'm really happy with the product and the team behind the brand."

With reliable, high-performance solutions, engcon supports public works professionals in optimising their sites, meeting the growing demands of the field.



**NEW!**

## TWO NEW MODELS IN **SERIES 3**

The Series 3 offers the ultimate tiltrotator experience, featuring future-proof technology, personalised settings and the option to upgrade to advanced functions such as implement recognition.

- + Load-sensing hydraulics with individual pressure-compensated operation
- + Supplied with EC-Oil both above and below the tiltrotator as standard
- + Supplied ready-fitted for a detachable cable sweeper and detachable grapple

**KEEP AN EYE OUT!**

FOUR MORE MODELS ARE DUE  
TO BE LAUNCHED IN 2026

**engcon**<sup>®</sup>

engcon UK Ltd Unit 5 Ashchurch Business Centre, Tewkesbury, GL20 8NB  
+44 1684 297168 | uk@engcon.com | engcon.com/uk



**EC326**

Base machine weight: 19-26 t



**EC333**

Base machine weight: 24-33 t